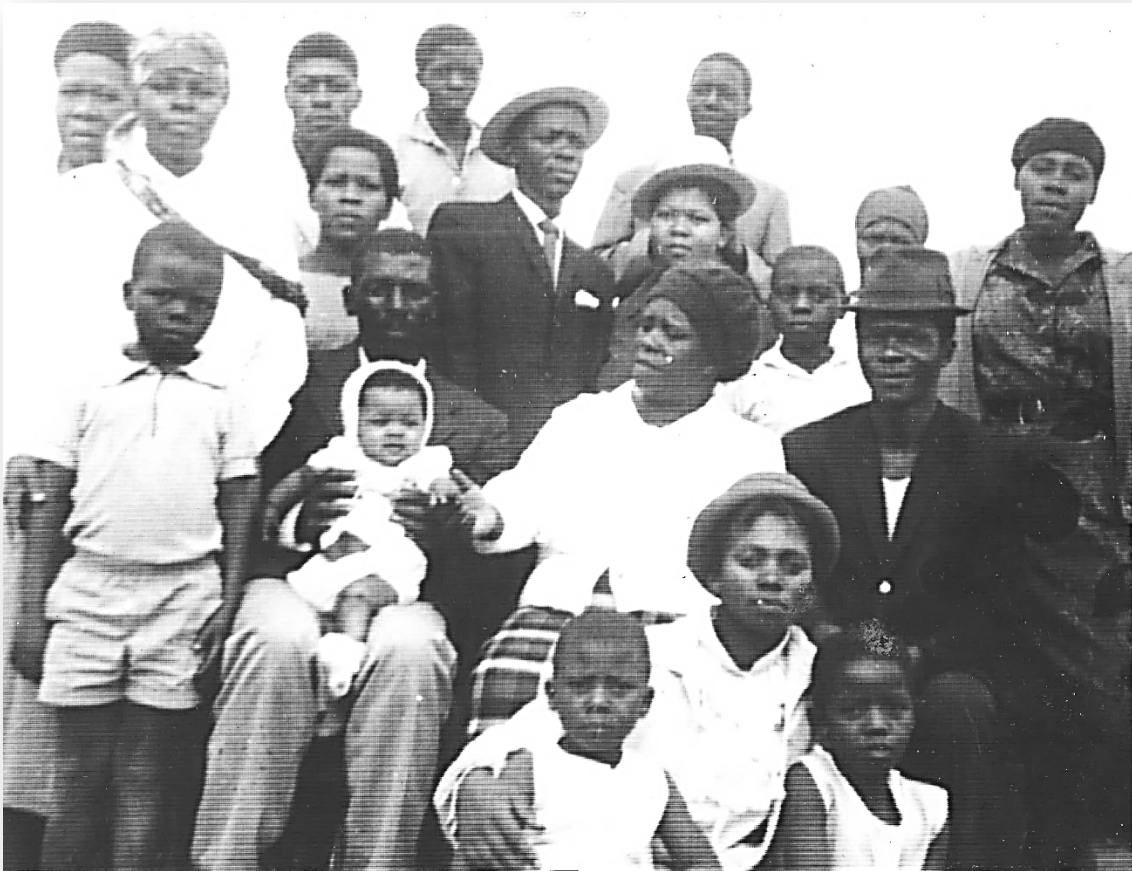


uNtabayezulu [1918-1990]



UBaba noMama (**uMkhulunyelwa kaSomcuba noKaSiyaya wakwaKhumalo kwaBayeni kwelaseMahlabathini [uJonathan Khumalo, 1918-1990]**, noMaZungu kaMagqugumela noKaMhlungu wakwaBambelentulo eBaQulusini [uCatherine Ndindi Khumalo, 1922-2001]) bagoné umzukulu wabo, **uThobekile [*1967]**, bephahlwé ngamadodana abo, oMbuso [1957-1997] noAzie [1941-2022]; phambi kwabo kuhleli amadodakazi abo, oNomusa [1962-2006] noMamile [1944-1995] noThoko [*1959]; emva kwabo kumi uMama uKaSthole uMkaSamsoni kaSomcuba noKaSiyaya wakwaKhumalo kwaBayeni kwelaseMahlabathini, uRozi wakwaKhumalo, indodana yabo (oBaba noMama) uRichard [*1942] nomakoti uMaNgcobo [*1944] (unina kaThobi), nendodana yabo (oBaba noMama) uSizwe [1954-1994], kugcine uMlili [*1944] (indodakazi yoKaSthole noSamsoni baseMahlabathini); emgqeni wokugcina kumi uMamkhulu uElikha uBahlanganisile kaMagqugumela noKaMhlungu wakwaBambelentulo eBaQulusini [1908-1974] noJona [1942-2009] (indodana yoKaSthole noSamsoni baseMahlabathini) namadodana abo (oBaba noMama),

*oBheni [*1950] noBongani [1952-2020] – mhla ka-18.01.1968, kuthakaselwa ukushada kukaMaNgcobo noRichard [17.06.1967].*

2023

UNtabayezulu ozala thina, uMkhulunyelwa kaSomcuba noKaSiyaya wakwaKhumalo kwelaseMahlabatini [uJonathan Khumalo, 1918-1990], ubezobe ehlanganisa owekhulu nesihlanu (*105) nonyaka [2023].

Siyahalalisa sithi:

Donda!

*Wen' owadl' izimf' ezimbili;
ikhambi laphuma lilinye!*

Mashobana!

Simkhumbula ikakhulukazi:

- sisebancane, simjabulela efika ebuya emsebenzini kwaLoliwe, esiphathele `amafelamlonyeni' nezibiliboco nomemukelo; kokunye afike esiphathele unogwaja asizingelele wona noma yinyoni asishaye yona endleleni noma amakhowe asiqhibulele wona, ***sidle!***
- ethathé ilivu [1957], wayosixolisela eskoleni, wasithatha sonke ngesitimela wayosivakashisa eThekwini, sabona ulwandle namagagasi, sayodla sazidelisa eMatsheni, sagibela orisha, wasithengela okokwembatha nezicathulo, ***sabuya singawuhlanganisi umlomo*** ngobuhle nobumnandi!
- esincokolisa, esifundisa, esixwayisa, eseluleka, esiyala, esithethisa, ...
- ***ezikhathini ezazingelula***, sesachithwa [emanxiweni akwethu kwaBhanya](#), sayoquba eMathendeni, sedlulela eLokshini, sedlulela eMondlo ...
- [evakashelé abantwabakhe nabazukulu eSoweto ...](#)
- evakashelé abantwabakhe nabazukulu eJalimane [nokubhabhadiswa kwakhe khona](#) [1986] ...
- [esesihambelé phambili ...](#)



izimbadada zikaNtabayezulu asishiyela zona eJalimane [1986]

Sizoqhubeka sinikana ithuba sidedelana, sikhumbuzane ngezikhathi zasebunganeni nasekukhuleni kwethu, sixoxelane ngokuningi kanye nangamahlaya esakhula sincokolisana ngawo thina bozalo nabomndeni kaNtabayezulu – sikulobe phansi, sikulondoloze.



Inzalo yethu nemindeni yayo isingakhuthazeka-ke lapho ukuthi iqhubeke iziphathe ngokuzihlonipa nokwazisana nokubonelelana, ***ihamba ezinyathelweni zikaBaba*** – umkhulu, ukhokho wabo.

Yithi

[*Izelamani zikaMkhulunyekwa noMaZungu bakwaKhumalo eBaQulusini*](#) [2023]